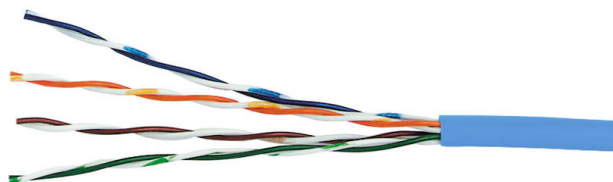


Excel Category 5E Cable U/UTP Dca LS0H 305m Box - Blue

Item Code: 100-062

excel
without compromise.



✕ Choice of colour

✕ Supports Gigabit Ethernet

✕ Fast feed box

✕ Sequential metre markings

✕ Euroclass Dca-s2-d2-a2

Product Overview

Excel Category 5e Unscreened Cables are manufactured and tested to the ISO 11801, EN 50173 and ANSI/TIA-568-C standards for enhanced performance Category 5 cables. Each cable consists of 8 colour coded polyethylene insulated conductors. These are twisted together to form 4 pairs with varying lay lengths.

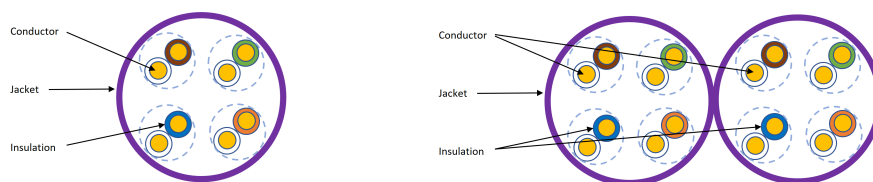
The print legend on the cable now includes information regarding the DOP number, Test and Classification of the cable for traceability.

Product Specifications

| Feature | Values |
|---|--------|
| Category | 5E |
| Overall screening | None |
| Conductor screening | None |
| Outer sheath colour | Blue |
| Reaction-to-fire class according to EN 13501-6 | Dca |
| Smoke development class according to EN 13501-6 | s2 |
| Euro class flaming droplets/particles according to EN 13501-6 | d2 |
| Euro class acidity according to EN 13501-6 | a2 |
| AWG-size | 24 |
| Specification core insulation | PE |
| Core identification | Colour |

| | |
|----------------------------------|--|
| Outer sheath material | Copolymer |
| Halogen free (acc. EN 60754-1/2) | Yes |
| Flame retardant | In accordance with EN 60332-1-2 and EN 50399 |
| Low smoke (acc. BS EN 61034-2) | Yes |
| Outer diameter approx. | 5.2 mm |
| Operating Temperature Range | -20...60 °C |
| NVP value | 70 % |
| Conductor category | Class 1 = solid |
| Total number of cores | 8 |
| Stranding element | Pairs |
| Conductor surface | Bare |

Cross-section diagram



Cable specifications

| Features | Values |
|-------------------------|--------------|
| Dielectric strength | 2.5kV for 2s |
| Maximum Pulling Load | 60N/6.1KgF |
| MBR during installation | 8x cable OD |
| MBR installed | 4x cable OD |

Standards

| Applicable standard | Subject |
|--------------------------------|--|
| ISO/IEC 11801-1:2017 | Information technology - Generic cabling for customer premises: Part 1 General Requirements |
| IEC 61156-5:2009+AMD1:2012 CSV | Multicore and symmetrical pair/quad cables for digital communications - Part 5: Symmetrical pair/quad cables with transmission characteristics up to 1 000 MHz - Horizontal floor wiring - Sectional specification |
| EN 50173-1:2011 | Information technology. Generic cabling systems - General requirements |
| EN 50173-2:2007 + A1:2010 | Information technology. Generic cabling systems - Office premises |
| BS EN 50288-6-1:2013 | Multi-element metallic cables used in analogue and digital communication and control. Sectional specification for unscreened cables characterised up to 250 MHz |
| EN 50399:2011+A1:2016 | Common test methods for cables under fire conditions. Heat release and smoke production measurement on cables during flame spread test. Test apparatus, procedures, results |
| IEC 60332-1-2:2004 | Tests on electric and optical fibre cables under fire conditions. Test for vertical flame propagation for a single insulated wire or cable. Procedure for 1 kW pre-mixed flame |
| ANSI/TIA 568-2.D | Balanced Twisted-Pair Telecommunications Cabling and Components Standards |
| IEC 60754-2:2011 | Test on gases evolved during combustion of materials from cables - Part 2: Determination of acidity (by pH measurement) and conductivity |
| IEC 61034-2:2005+A1:2013 | Measurement of smoke density of cables burning under defined conditions - Part 2: Test procedure and requirements |
| EN 50575:2014 + A1:2016 | Power, control and communication cables — Cables for general applications in construction works subject to reaction to fire requirements |
| RoHS | Restriction of Hazardous Substances - Compliant |

Excel Category 5E Cable U/UTP Dca LS0H 305m Box - Blue

Item Code: 100-062



Part Number Table

| Part Number | Description |
|-------------|---|
| 100-057 | Excel Category 5E Cable U/UTP Dca LS0H 305m Box - Orange |
| 100-059 | Excel Category 5E Cable U/UTP Eca PVC 500m Reel - Grey |
| 100-060 | Excel Category 5E Cable U/UTP Dca LS0H 305m Box - White |
| 100-061 | Excel Category 5E Cable U/UTP Dca LS0H 305m Box - Red |
| 100-062 | Excel Category 5E Cable U/UTP Dca LS0H 305m Box - Blue |
| 100-063 | Excel Category 5E Cable U/UTP Dca LS0H 305m Box - Green |
| 100-064 | Excel Category 5E Cable U/UTP Dca LS0H 305m Box - Yellow |
| 100-066 | Excel Category 5E Cable U/UTP Dca LS0H 305m Box - Violet |
| 100-102 | Excel Category 5E Dual Cable U/UTP Eca LS0H 500m Reel - White |
| 170-066 | Excel Category 5E Cable U/UTP Cca LS0H 305m Box - Violet |

Excel is a world class premium performing end to end infrastructure solution designed, Manufactured, supported and delivered without compromise.

Contact us at sales@excel-networking.com



E&OE. Excel is a registered trade name of Mayflex Holdings Ltd.